

777 West Goforth, Buda, TX

Suite G&H. Buda Business Park Condominiums! Close to South I-35

INDUSTRIAL

offered at \$356,400

| | |
|------------|------------------|
| Year Built | 2006 |
| Sq Footage | 3,600 |
| Floors | 1 |
| Parking | Uncovered spaces |
| Lot Size | Unspecified |
| Maint | \$42 per month |



DESCRIPTION

Location : Located in Buda, on the North side of Goforth Rd .5 mile west of IH-35

Utilities : All public utilities service the site.
Minimum CAM!

Zoning : A wide variety of uses are grandfathered pursuant to the Development Agreement, including but not limited to, light industrial, retail, office, storage, warehousing, freight movement, and commercial uses.

Jurisdiction : Located in Hays County, subject to City of Buda development ordinances.



PROPERTY FEATURES

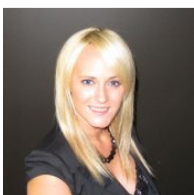
- Suite G&H. Condominiums Great for Office/ Warehouse
- Finish Out Negotiable

LOCATION FEATURES

- .5 mile from South I-35 near Cabela's in Buda Texas

OTHER SPECIAL FEATURES

- Overhead door and private office/ restroom / and reception area
- Suite G&H



Contact Info:

Jessica Luth

Williams and Associates

Licensed Agent

(512) 689-3964

For sale by agent/broker

INDUSTRIAL

offered at \$99,900

| | |
|------------|------------------|
| Year Built | 2011 |
| Sq Footage | 1,000 |
| Floors | 1 |
| Parking | Uncovered spaces |
| Lot Size | Unspecified |
| Maint | \$42 per month |

DESCRIPTION

Units Under Construction @ \$99.9/ sq.ft.
Units with SF increments from:
1000-3000 SF to include office, reception and 1/2 bath.
3001-7000 SF to include 2 offices, reception, and 1/2 bath.

Location : Located in Buda, on the North side of Goforth Rd .5 mile west of IH-35

Utilities : All public utilities service the site.

Minimum CAM!

Zoning : A wide variety of uses are grandfathered pursuant to the Development Agreement, including but not limited to, light industrial, retail, office, storage, warehousing, freight movement, and commercial uses.

Jurisdiction : Located in Hays County, subject to City of Buda development ordinances.

PROPERTY FEATURES

- Condominiums great for office / warehouse use
- under construction warehouses built in 1000 SF increments for \$99.90 a SF

LOCATION FEATURES

- Easy Access to S. I-35 in Buda TX, .5 miles from I-35 S, Close to Cabela's

OTHER SPECIAL FEATURES

- Overhead doors, private offices, reception areas, and bathrooms



INDUSTRIAL

offered at \$640,800

| | |
|------------|------------------|
| Year Built | 2006 |
| Sq Footage | 7,200 |
| Floors | 1 |
| Parking | Uncovered spaces |
| Lot Size | Unspecified |
| Maint | \$42 per month |

DESCRIPTION

Location : Located in Buda, on the North side of Goforth Rd .5 mile west of IH-35

Utilities : All public utilities service the site.

Minimum CAM!

Zoning : A wide variety of uses are grandfathered pursuant to the Development Agreement, including but not limited to, light industrial, retail, office, storage, warehousing, freight movement, and commercial uses.

Jurisdiction : Located in Hays County, subject to City of Buda development ordinances.



PROPERTY FEATURES

- Condominiums great for office/ warehouse
- Finish Out Negotiable

LOCATION FEATURES

- .5 mile off I-35 South in Buda Texas

OTHER SPECIAL FEATURES

- Overhead door, 3 offices, 2 bathrooms, and a reception area

INDUSTRIAL

offered at \$178,200

| | |
|------------|------------------|
| Year Built | 2006 |
| Sq Footage | 1,800 |
| Floors | 1 |
| Parking | Uncovered spaces |
| Lot Size | Unspecified |
| Maint | \$42 per month |

DESCRIPTION

Location : Located in Buda, on the North side of Goforth Rd .5 mile west of IH-35

Utilities : All public utilities service the site.

Minimum CAM!

Zoning : A wide variety of uses are grandfathered pursuant to the Development Agreement, including but not limited to, light industrial, retail, office, storage, warehousing, freight movement, and commercial uses.

Jurisdiction : Located in Hays County, subject to City of Buda development ordinances.



PROPERTY FEATURES

- Great for office/warehouse
- Buda Condominium

LOCATION FEATURES

- Easy Access to I-35 South about 1/2 mile from I-35
- Close to Cabela's

OTHER SPECIAL FEATURES

- Overhead door and private office
- Bathroom
- Finish Out Negotiable!